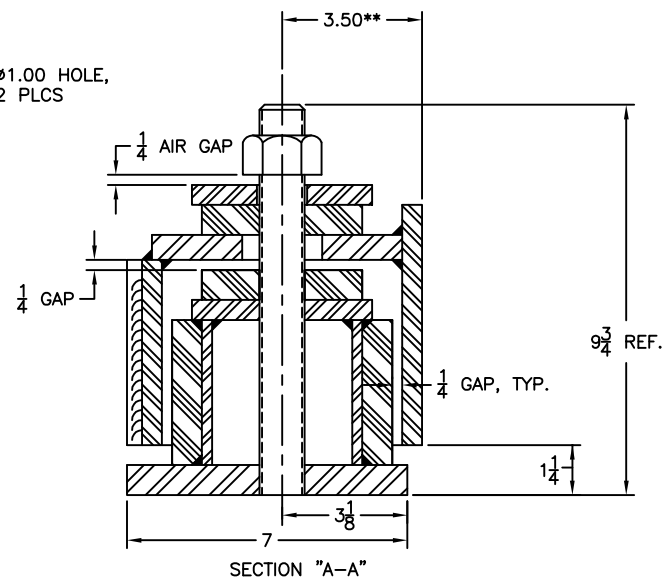
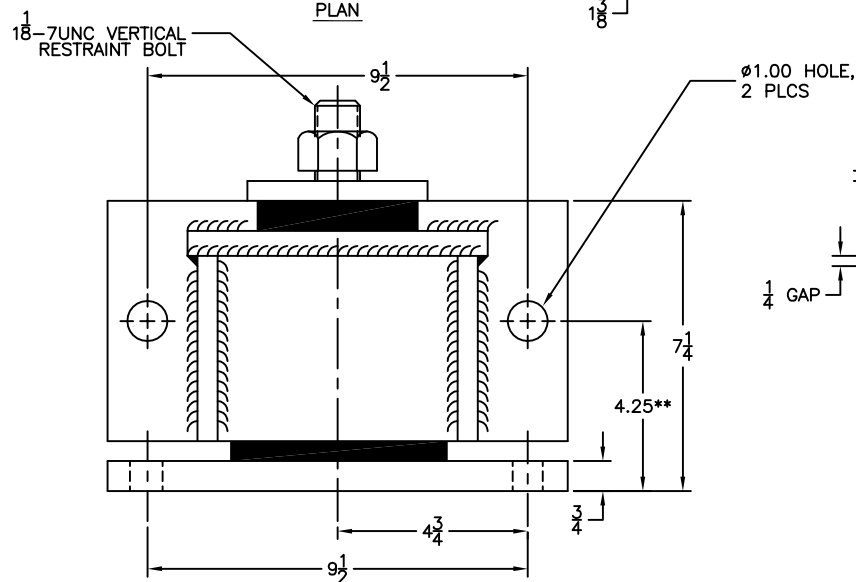
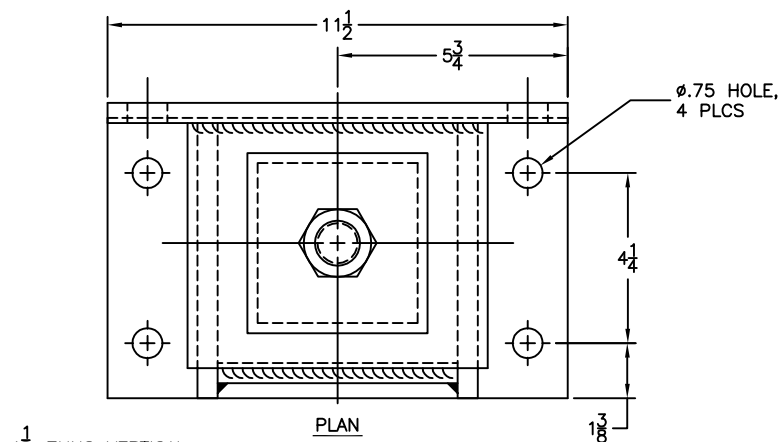


196R-103439	REV.: 3
-------------	---------

PART NUMBER	DESCRIPTION
630596-1	AS SHOWN - PAINTED HOUSING
630596-1G	HOT-DIPPED GALVANIZED IN LIEU OF PAINT

REV.	DESCRIPTION	DATE	BY



- NOTES:
1. ALL DIRECTIONAL CAPACITY: 7500 LBS
 2. DYNAMIC STIFFNESS: 60,000 LBS/INCH
 3. AIR GAP: 1/4" IN ALL DIRECTIONS
 4. DIMENSIONS MARKED WITH DOUBLE ASTERICKS (**) MUST BE HELD TO $\pm 1/16$ AT INSTALLATION. SHIM OR GROUT AS NECESSARY.
 5. APPROXIMATE UNIT WEIGHT: 62 LBS

OTHER MATERIALS, COMPOUNDS, OR FINISHES WITH EQUAL OR SUPERIOR PROPERTIES MAY BE SUBSTITUTED AS THEY BECOME AVAILABLE.

CERTIFIED FOR:

JOB NAME: _____

CUSTOMER :

CUSTOMER P.O.: _____

SALES ORDER: _____

MODEL SR-7500 SPECIAL SEISMIC SNUBBER RESTRAINT



THE VMC GROUP
The Power of Together
Bloomington, NJ 07403
Houston, TX 77041

SCALE :

NONE

SHEET:

1 OF 1

DRAWING NO.:

REVISION

